

HARDSCAPE COLLECTION



**R.I. Lampus**  
Company



# BUILDING BLOCKS FOR LOCAL LIVING.



GRANDVIEW™ - DESERT BLEND WITH STRATFORD ACCENT - ANTHRACITE  
ALSO SHOWN: STONECRAFT™ VENEER - LEDGESTONE, BUCKTOWN

PRODUCT SHOWN ON COVER: COUNTRY STONE - DESERT BLEND & DESERT BLEND (SPLIT); HOLLAND - DESERT BLEND;  
OMNI-VINTAGE™ - DESERT BLEND; LIMESTONE COLUMN CAP - NATURAL









## ICON LEGEND



Products are manufactured using Proguard technology. See page 69 for more info.



Products are able to be installed as permeable paving stones. See page 68 for more info.



Use of a plate compactor is recommended. Care should be taken to protect paving surface with the use of a protective pad.



The use of compaction equipment is not recommended and may void warranty.



Product falls under dry cast product warranty.



Product falls under wet cast product warranty.

## PRODUCT WARRANTY



R.I. Lampus Company guarantees that all dry cast wall and paving stone products meet or exceed the requirements of ASTM C-1372 for walls and ASTM C-936 for paving stones. This warranty is limited to the original purchaser for residential applications installed and maintained according to R.I. Lampus Company installation guidelines or industry standards. Damage sustained as a result of improper installation or design, chemical application, excessive loading, or other misuse is expressly excluded from this warranty. Should any dry cast product prove defective, it will be replaced without cost. Replacement labor and shipping costs are not included in this guarantee. Proof of purchase is required. Retain the warranty tag with batch information for all claims.

R.I. Lampus Company specifically disclaims any warranty relative to color, color consistency, or texture due to natural material variations. Color matching of any replacement units cannot be guaranteed. Efflorescence, a white deposit, common on concrete and masonry surfaces, is a natural occurrence and no warranty or liability is expressed or implied for this condition.



Wet cast products including Rosetta® Hardscape Products manufactured by Omni Precast Products, Inc and distributed through R.I. Lampus Company are backed by a lifetime warranty from the manufacturer to the original end user, for products used in residential applications. This assurance of product quality is applicable where products have been correctly installed to manufacturer's specifications or industry standards. Any properly installed hardscape material manufactured by Omni Precast Products, Inc that deteriorates due to the concrete in the product not meeting the design strength specification will be replaced by the manufacturer of the product. Replacement labor and shipping costs are not included in this guarantee. Proof of purchase is required. Retain the warranty tag with batch information for all claims. The following items are not covered by this warranty: color variances and the appearance of surface stains resulting from chemical reactions such as efflorescence or differential curing; damage caused by installation; deterioration caused by de-icing salts or fertilizers; damage resulting from sub-grade settlement or movement, hairline cracks that do not affect the structural performance of the products, spalling of less than three percent of the surface area, contact with chemicals or paint, discoloration due to airborne contamination, staining, oxidation, or improper sealing. Products purchased must be registered with the manufacturer within 60 days of end users purchase for warranty to be valid.





## COLOR DISCLAIMER

The colors of products shown in this catalog are to be used as representations or guidelines only. The photographic and printing processes are not fully capable of reproducing exact colors of all products. Colors may also change from production run to production run. All products are not warranted as always available in all locations and R.I. Lampus Company may change, amend, add, or discontinue any product, shape or color at the sole discretion of R.I. Lampus Company with no prior notification. Not all colors are available in all shapes. Check with the sales department for availability. To assure random color distribution, it is recommended that individual blocks be mixed from different pallets on the job site. Actual product colors may vary slightly. We recommend that products be viewed at your local Distributor location. Special order colors are available upon request.

## PRODUCT MAINTENANCE

The face of retaining walls can be stained due to mineral and moisture laden soil in the backfill area. Cleaners and sealers are available for routine wall maintenance.

Cleaners and sealers are available for surface enhancements and protection when necessary. Any concrete products used for stair tread applications may require a protective sealant to resist adverse effects of de-icing agents.

Snow can be shoveled or plowed from pavers as readily as other pavements. High strength, low absorption R.I. Lampus Company pavers are more resistant to de-icing salts than ordinary concretes, but they can still be damaged by intense applications. Sealers will help to protect the surface.

*R.I. Lampus Company wishes to express sincere appreciation to those individuals and businesses who contributed to this catalog by permitting photography of their property or job site.*

<b>PAVING STONES</b> .....	<b>4</b>
<b>GRANDVIEW™</b> .....	<b>6</b>
<b>HERITAGE</b> .....	<b>8</b>
<b>HERITAGE CIRCLE</b> .....	<b>10</b>
<b>HOLLAND</b> .....	<b>12</b>
<b>LIGONIER</b> .....	<b>14</b>
<b>OMNI-VINTAGE™</b> .....	<b>16</b>
<b>OXFORD</b> .....	<b>18</b>
<b>STRATFORD</b> .....	<b>20</b>
<b>STRATFORD CIRCLE</b> .....	<b>22</b>
<b>RETAINING WALLS</b> .....	<b>24</b>
<b>CASTLEROK®</b> .....	<b>26</b>
<b>COUNTRY STONE</b> .....	<b>28</b>
<b>ROSETTA® BELVEDERE</b> .....	<b>30</b>
<b>ROSETTA® KODAH</b> .....	<b>32</b>
<b>ROSETTA® OUTCROPPING</b> .....	<b>34</b>
<b>SERIES 500</b> .....	<b>36</b>
<b>SERIES 2500</b> .....	<b>37</b>
<b>VERSA-LOK® STANDARD</b> .....	<b>38</b>
<b>VERSA-LOK® ACCENT</b> .....	<b>40</b>
<b>VERSA-LOK® COBBLE</b> .....	<b>40</b>
<b>VERSA-LOK® MOSAIC</b> .....	<b>42</b>
<b>VERSA-LOK® SQ. FT. BLOCK</b> .....	<b>44</b>
<b>CAPS &amp; COPING</b> .....	<b>46</b>
<b>C CAP &amp; C-2 CAP</b> .....	<b>48</b>
<b>OMNI-VINTAGE™ 750</b> .....	<b>50</b>
<b>TAPERED BULLNOSE CAP</b> .....	<b>51</b>
<b>ROSETTA® CAPS &amp; COPING</b> .....	<b>52</b>
<b>LIMESTONE COLUMN CAP</b> .....	<b>54</b>
<b>PREMIER COLUMN CAP</b> .....	<b>55</b>
<b>STEPS &amp; STEPPING STONES</b> .....	<b>56</b>
<b>CABIN ROCK™</b> .....	<b>58</b>
<b>PREMIER STEP</b> .....	<b>59</b>
<b>ROSETTA® DIMENSIONAL STEP</b> .....	<b>60</b>
<b>ROSETTA® IRREGULAR STEP</b> .....	<b>62</b>
<b>ALSO AVAILABLE</b> .....	<b>64</b>
<b>CLAY BRICK</b> .....	<b>64</b>
<b>CLASSIC STONE</b> .....	<b>65</b>
<b>DYNAPRINT®</b> .....	<b>65</b>
<b>ECO-TEK®</b> .....	<b>65</b>
<b>HOLLAND COLONIAL</b> .....	<b>65</b>
<b>HANDY STONE® II</b> .....	<b>65</b>
<b>LANDING STONE</b> .....	<b>65</b>
<b>ACCENTS &amp; BORDERS</b> .....	<b>66</b>
<b>ACCESSORIES</b> .....	<b>67</b>
<b>ECO-FRIENDLY</b> .....	<b>68</b>
<b>PROGUARD</b> .....	<b>69</b>
<b>OUR HISTORY</b> .....	<b>70</b>









**PAVING STONES**

**GRANDVIEW™ ..... 6**

**HERITAGE ..... 8**

**HERITAGE CIRCLE ..... 10**

**HOLLAND ..... 12**

**LIGONIER ..... 14**

**OMNI-VINTAGE™ ..... 16**

**OXFORD ..... 18**

**STRATFORD ..... 20**

**STRATFORD CIRCLE ..... 22**





GRANDVIEW™ - SLATE BLEND  
 ALSO SHOWN: ELDORADO - INFINITE ARTISAN FIRE BOWL, BLACK SAND

# GRANDVIEW™



12" x 18" x 2 3/8"  
 99 sq. ft. / pallet  
 2,732 lbs. / pallet



12" x 12" x 2 3/8"



6" x 12" x 2 3/8"

CONTAINED IN PALLET

Available in 3 1/8" thickness by special order.





GRANDVIEW™ - NEWPORT BLEND  
 ALSO SHOWN: HOLLAND - ANTHRACITE; ELDORADO - HILLSTONE, VERONA



GRANDVIEW™ - DESERT BLEND (SEALED)  
 ALSO SHOWN: VERSA-LOK® STANDARD & COBBLE - ALLEGHENY BLEND; ELDORADO - MT. LEDGE PANELS, SILVERTON

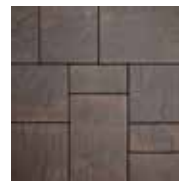
*The colors of products shown are for reference only. Actual colors may vary.*



ALLEGHENY BLEND



DESERT BLEND



NEWPORT BLEND



SIERRA BLEND



SLATE BLEND





HERITAGE - ALLEGHENY BLEND  
 ALSO SHOWN: LIGONIER - ANTHRACITE; COUNTRY STONE - ALLEGHENY BLEND; COUNTRY STONE - ANTHRACITE (SPLIT)

# HERITAGE



6 1/4" x 9 3/8" x 2 3/8"  
 111 sq. ft. / pallet  
 3,004 lbs. / pallet



6 1/4" x 6 1/4" x 2 3/8"  
 104 sq. ft. / pallet  
 2,740 lbs. / pallet



4 3/16" x 6 1/4" x 2 3/8"  
 104 sq. ft. / pallet  
 2,840 lbs. / pallet





HERITAGE - SIERRA BLEND  
 ALSO SHOWN: HERITAGE CIRCLE - SIERRA BLEND



HERITAGE - SLATE BLEND  
 ALSO SHOWN: VERSA-LOK® STANDARD - WEATHERED ALLEGHENY BLEND; C CAP - WEATHERED ALLEGHENY BLEND

*The colors of products shown are for reference only. Actual colors may vary.*



ALLEGHENY BLEND



DESERT BLEND



NEWPORT BLEND



SIERRA BLEND





HERITAGE CIRCLE - SIERRA BLEND  
 ALSO SHOWN: VERSA-LOK® STANDARD - SANDSTONE; C CAP - SANDSTONE

# HERITAGE CIRCLE



7"-2 3/4" x 6 1/4" x 2 3/8"  
 64 sq. ft. / pallet  
 1,700 lbs. / pallet



3 1/8" x 6 1/4" x 2 3/8"



5 1/4"-3 7/8" x 6 1/4" x 2 3/8"



3 1/8" x 6 1/4" x 2 3/8"



4 5/8" x 6 1/4" x 2 3/8"

CONTAINED IN PALLET





HERITAGE CIRCLE - NEWPORT BLEND  
 ALSO SHOWN: HOLLAND - DESERT BLEND; CASTLEROK® - DESERT BLEND



HERITAGE CIRCLE - ALLEGHENY BLEND  
 ALSO SHOWN: ROSETTA® OUTCROPPING - MOUNTAIN RUSTIC

*The colors of products shown are for reference only. Actual colors may vary.*



ALLEGHENY BLEND



DESERT BLEND



NEWPORT BLEND



SIERRA BLEND





HOLLAND - DESERT BLEND

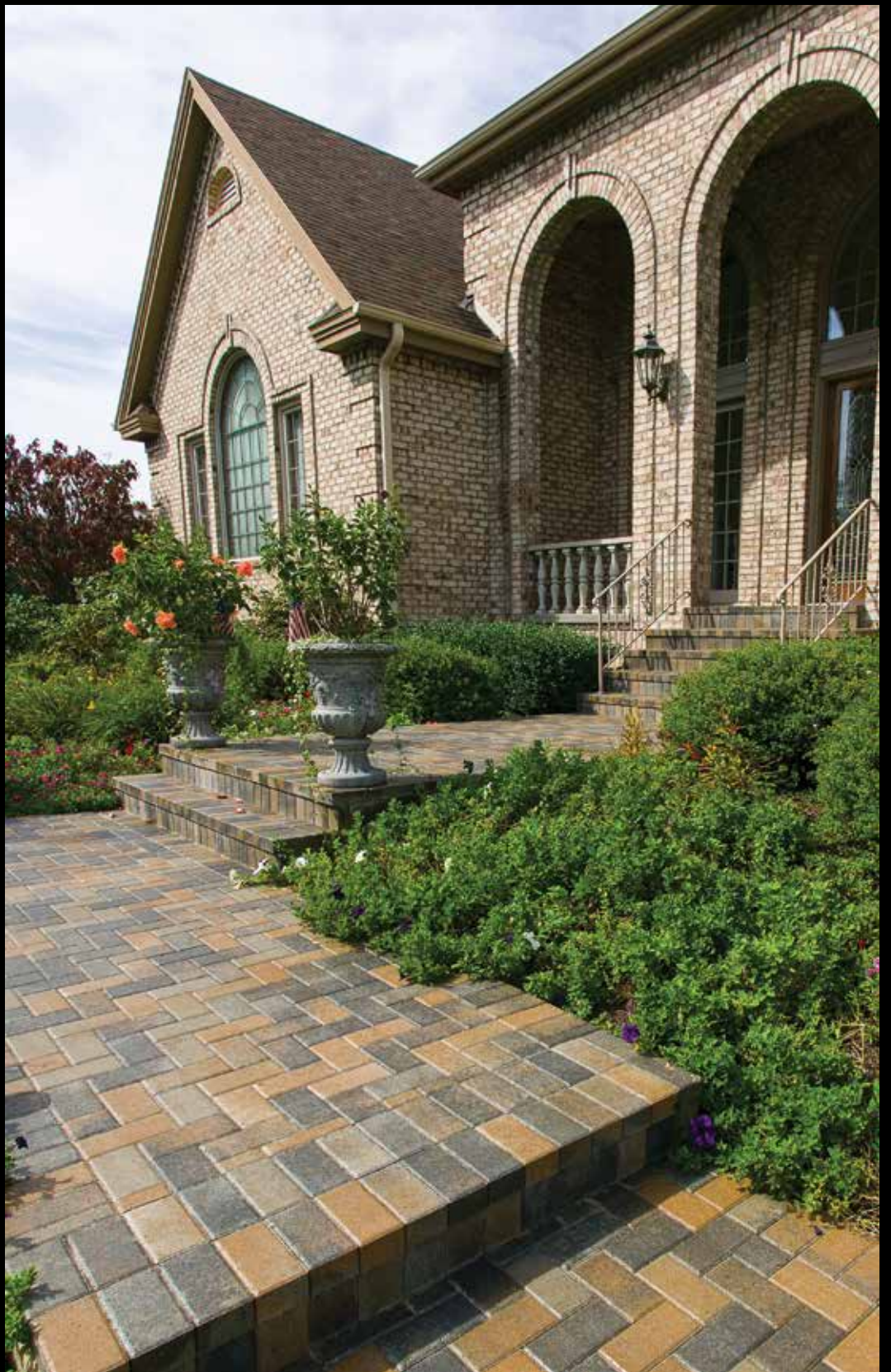
# HOLLAND



3 15/16" x 7 7/8" x 2 3/8"  
105 sq. ft. / pallet  
2,920 lbs. / pallet

Available in 3 1/8" thickness by special order.





HOLLAND - ALLEGHENY BLEND (SEALED)

*The colors of products shown are for reference only. Actual colors may vary.*



ALLEGHENY BLEND



CHARCOAL



DARK BROWN



DESERT BLEND



LIGHT BROWN



NATURAL



NEWPORT BLEND



RED



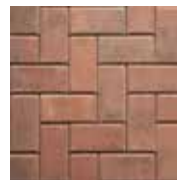
SARATOGA BLEND



SIERRA BLEND



SLATE BLEND



WILLIAMSBURG BLEND



ANTHRACITE \*



ESPRESSO \*

\*Only available in Proguard half pallet accents.





LIGONIER - ANTHRACITE (WET)

# LIGONIER



5" x 8 1/2" x 2 3/8"  
96 sq. ft. / pallet  
2,400 lbs. / pallet



5" x 6 1/4" x 2 3/8"



5" x 7 1/4" x 2 3/8"

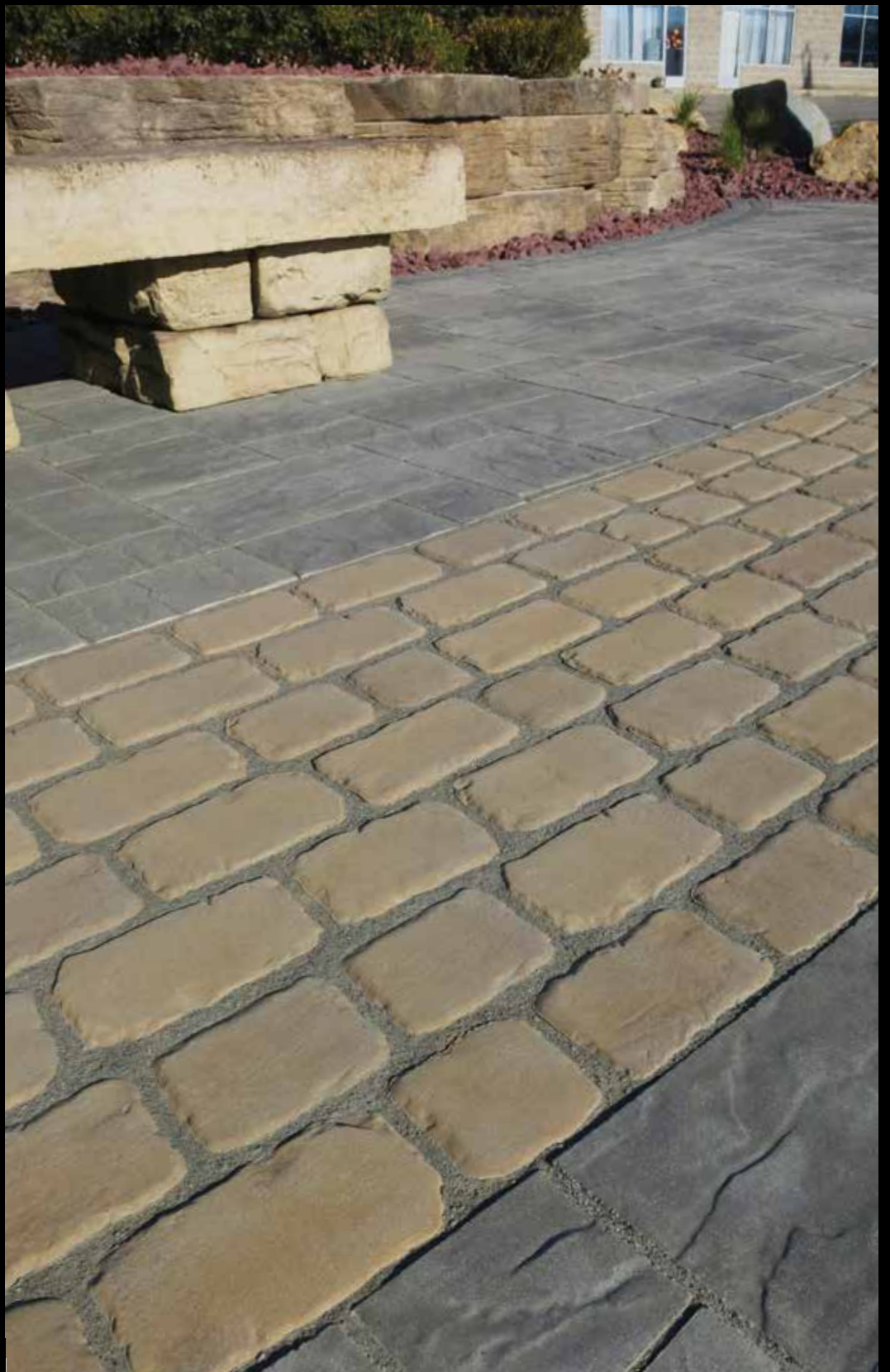


5" x 5" x 2 3/8"

CONTAINED IN PALLET

Only available in Proguard.





LIGONIER - DESERT BLEND  
 ALSO SHOWN: GRANDVIEW™ - SLATE BLEND; ROSETTA® OUTCROPPING & BENCH KIT - MOUNTAIN RUSTIC

*The colors of products shown are for reference only. Actual colors may vary.*



**ALLEGHENY BLEND**



**DESERT BLEND**



**SLATE BLEND**

125 ln. ft. / 1/2 pallet  
 53 sq. ft. / 1/2 pallet  
 1,333 lbs. / 1/2 pallet



**ANTHRACITE \***



**ESPRESSO \***

\*Only available in half pallet accents.





OMNI-VINTAGE™ - SIERRA BLEND

# OMNI-VINTAGE™



750:  
10 <sup>7</sup>/<sub>8</sub>" x 16 <sup>1</sup>/<sub>2</sub>" x 2 <sup>3</sup>/<sub>4</sub>"  
81 sq. ft. / pallet  
2,610 lbs. / pallet



500:  
10 <sup>7</sup>/<sub>8</sub>" x 8 <sup>1</sup>/<sub>8</sub>" x 2 <sup>3</sup>/<sub>4</sub>"  
80 sq. ft. / pallet  
2,575 lbs. / pallet



250:  
5 <sup>3</sup>/<sub>8</sub>" x 8 <sup>1</sup>/<sub>8</sub>" x 2 <sup>3</sup>/<sub>4</sub>"  
75 sq. ft. / pallet  
2,415 lbs. / pallet



200:  
5 <sup>3</sup>/<sub>8</sub>" x 5 <sup>3</sup>/<sub>8</sub>" x 2 <sup>3</sup>/<sub>4</sub>"  
79 sq. ft. / pallet  
2,550 lbs. / pallet



100: ONLY IN MIX  
5 <sup>3</sup>/<sub>8</sub>" x 2 <sup>3</sup>/<sub>8</sub>" x 2 <sup>3</sup>/<sub>4</sub>"  
80 sq. ft. / MIX pallet  
2,575 lbs. / MIX pallet

CONTAINED IN MIX PALLET





OMNI-VINTAGE™ - ALLEGHENY BLEND  
 ALSO SHOWN: ROSETTA® BELVEDERE FIRE PIT KIT - MOUNTAIN RUSTIC



OMNI-VINTAGE™ - ALLEGHENY BLEND  
 ALSO SHOWN: COUNTRY STONE - ALLEGHENY BLEND; CASTLEROK® - DESERT BLEND

*The colors of products shown are for reference only. Actual colors may vary.*



ALLEGHENY BLEND



DESERT BLEND



SIERRA BLEND





OXFORD - NEWPORT BLEND  
 ALSO SHOWN: STRATFORD CIRCLE - DESERT BLEND; HOLLAND - DESERT BLEND; COUNTRY STONE - DESERT BLEND; OMNI-VINTAGE™ 750 - DESERT BLEND

# OXFORD



5 1/2" x 8 1/4" x 2 3/8"  
 91 sq. ft. / pallet  
 2,457 lbs. / pallet



5 1/2" x 5 1/2" x 2 3/8"

CONTAINED IN PALLET





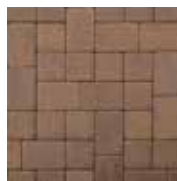
*The colors of products shown are for reference only. Actual colors may vary.*



**ALLEGHENY BLEND**



**DARK BROWN**



**DESERT BLEND**



**LIGHT BROWN**



**NEWPORT BLEND**



**SARATOGA BLEND**



**WILLIAMSBURG BLEND**





STRATFORD - DESERT BLEND

# STRATFORD



\*  
6 1/4" x 9 3/8" x 2 3/8"  
111 sq. ft. / pallet  
3,004 lbs. / pallet



6 1/4" x 6 1/4" x 2 3/8"  
104 sq. ft. / pallet  
2,815 lbs. / pallet



\*  
4 9/16" x 6 1/4" x 2 3/8"  
91 sq. ft. / pallet  
2,460 lbs. / pallet





The colors of products shown are for reference only. Actual colors may vary.



ALLEGHENY BLEND



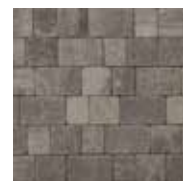
DESERT BLEND



NEWPORT BLEND



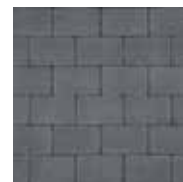
SARATOGA BLEND



SLATE BLEND



WILLIAMSBURG BLEND



ANTHRACITE \*



ESPRESSO \*

\*Only available in Proguard half pallet accents.





STRATFORD CIRCLE - DESERT BLEND  
 ALSO SHOWN: STRATFORD - DESERT BLEND

# STRATFORD CIRCLE



7'-2 3/4" x 6 1/4" x 2 3/8"  
 64 sq. ft. / pallet  
 1,732 lbs. / pallet



3 1/8" x 6 1/4" x 2 3/8"



5 1/4"-3 7/8" x 6 1/4" x 2 3/8"



3 1/8" x 6 1/4" x 2 3/8"



4 5/8" x 6 1/4" x 2 3/8"

CONTAINED IN PALLET





STRATFORD CIRCLE - SLATE BLEND  
 ALSO SHOWN: STRATFORD - SLATE BLEND

*The colors of products shown are for reference only. Actual colors may vary.*



ALLEGHENY BLEND



DESERT BLEND



NEWPORT BLEND



SARATOGA BLEND



SLATE BLEND



WILLIAMSBURG BLEND









## RETAINING WALLS

<b>CASTLEROK®</b> .....	<b>26</b>
<b>COUNTRY STONE</b> .....	<b>28</b>
<b>ROSETTA® BELVEDERE</b> .....	<b>30</b>
<b>ROSETTA® KODAH</b> .....	<b>32</b>
<b>ROSETTA® OUTCROPPING</b> .....	<b>34</b>
<b>SERIES 500</b> .....	<b>36</b>
<b>SERIES 2500</b> .....	<b>37</b>
<b>VERSA-LOK® STANDARD</b> .....	<b>38</b>
<b>VERSA-LOK® ACCENT</b> .....	<b>40</b>
<b>VERSA-LOK® COBBLE</b> .....	<b>40</b>
<b>VERSA-LOK® MOSAIC</b> .....	<b>42</b>
<b>VERSA-LOK® SQ. FT. BLOCK</b> .....	<b>44</b>





CASTLEROK® - DESERT BLEND  
 ALSO SHOWN: COUNTRY STONE - DESERT BLEND

# CASTLEROK®



9"-6" x 8" x 4"  
 90 units / pallet  
 22.5 face sq. ft. / pallet  
 1,710 lbs. / pallet

Visit [LAMPUS.COM](http://LAMPUS.COM) for fire pit installation guide.





CASTLEROK® - DESERT BLEND  
 ALSO SHOWN: VERSA-LOK® STANDARD - WEATHERED DESERT BLEND; C CAP - WEATHERED DESERT BLEND; HERITAGE - DESERT BLEND

*The colors of products shown are for reference only. Actual colors may vary.*



ALLEGHENY BLEND



DESERT BLEND



SARATOGA BLEND



SIERRA BLEND



SLATE BLEND





COUNTRY STONE - DESERT BLEND  
ALSO SHOWN: HOLLAND - DESERT BLEND; STRATFORD - DESERT BLEND; CLASSIC STONE - CAPPUCCINO

# COUNTRY STONE



12" x 8" x 4"  
60 units / pallet  
1,860 lbs. / pallet





COUNTRY STONE - ALLEGHENY BLEND & ANTHRACITE (SPLIT)  
 ALSO SHOWN: GRANDVIEW™ - DESERT BLEND; STRATFORD - ANTHRACITE



COUNTRY STONE - ALLEGHENY BLEND  
 ALSO SHOWN: OMNI-VINTAGE™ - SIERRA BLEND; LIMESTONE COLUMN CAP - NATURAL

*The colors of products shown are for reference only. Actual colors may vary.*



ALLEGHENY BLEND



DESERT BLEND



NEWPORT BLEND



SARATOGA BLEND



SIERRA BLEND



SLATE BLEND



ANTHRACITE



ESPRESSO





ROSETTA® BELVEDERE - MOUNTAIN RUSTIC  
 ALSO SHOWN: ROSETTA® BELVEDERE COLUMN CAP & COPING - MOUNTAIN RUSTIC; HERITAGE - ALLEGHENY BLEND

# ROSETTA® BELVEDERE



18" x 9" x 6"  
 27 face sq. ft. / pallet  
 2,475 lbs. / pallet



12" x 9" x 6"



6" x 9" x 6"



18" x 9" x 3"



12" x 9" x 3"



6" x 9" x 3"

CONTAINED IN PALLET

RETAINING WALLS





ROSETTA® BELVEDERE - CHARCOAL  
 ALSO SHOWN: ROSETTA® BELVEDERE COPING - CHARCOAL



ROSETTA® BELVEDERE - MOUNTAIN RUSTIC  
 ALSO SHOWN: ROSETTA® BELVEDERE COLUMN CAP, COPING & DIMENSIONAL STEP - MOUNTAIN RUSTIC

*The colors of products shown are for reference only. Actual colors may vary.*



CORNER:  
 15" x 9" x 6"  
 1,520 lbs. / pallet



CORNER:  
 15" x 9" x 3"

CONTAINED IN PALLET



CHARCOAL



MOUNTAIN RUSTIC





ROSETTA® KODAH - EARTH

# ROSETTA® KODAH NEW



42" x 10 1/2" x 6"  
21 face sq. ft. / pallet  
2,400 lbs. / pallet



30" x 10 1/2" x 6"



21" x 10 1/2" x 6"



12" x 10 1/2" x 6"



CORNER:  
21" x 10 1/2" x 6"  
31.5 face sq. ft. / pallet  
2,400 lbs. / pallet

CONTAINED IN PALLET





ROSETTA® KODAH - EARTH  
ALSO SHOWN: CUSTOM ACCENTS & COPING

*The colors of products shown are for reference only. Actual colors may vary.*



EARTH



SMOKE





ROSETTA® OUTCROPPING - MOUNTAIN RUSTIC

# ROSETTA® OUTCROPPING



Length: 2-6'  
Height: 6", 12", 18", & 24"  
18 face sq. ft. / pallet  
4,000 lbs. / pallet



CORNER:  
48" x 30" x 12"  
One 12" & One 6" / pallet  
2,500 lbs. / pallet



CORNER:  
39" x 27" x 6"

CONTAINED IN PALLET





ROSETTA® OUTCROPPING - MOUNTAIN RUSTIC  
ALSO SHOWN: ROSETTA® IRREGULAR STEP - MOUNTAIN RUSTIC



ROSETTA® OUTCROPPING - CHARCOAL

*The colors of products shown are for reference only. Actual colors may vary.*



CHARCOAL



MOUNTAIN RUSTIC





SERIES 500 - MOUNTAIN RUSTIC



SERIES 500 - CHARCOAL

# SERIES 500



24" x 24" x 12"  
4 units / pallet  
8 face sq. ft. / pallet  
2,240 lbs. / pallet



CORNER: 24" x 24" x 12"  
2 rights, 2 lefts / pallet  
1,620 lbs. / pallet



CAP: 24"-18" x 24" x 6"  
2 units / pallet  
600 lbs. / pallet



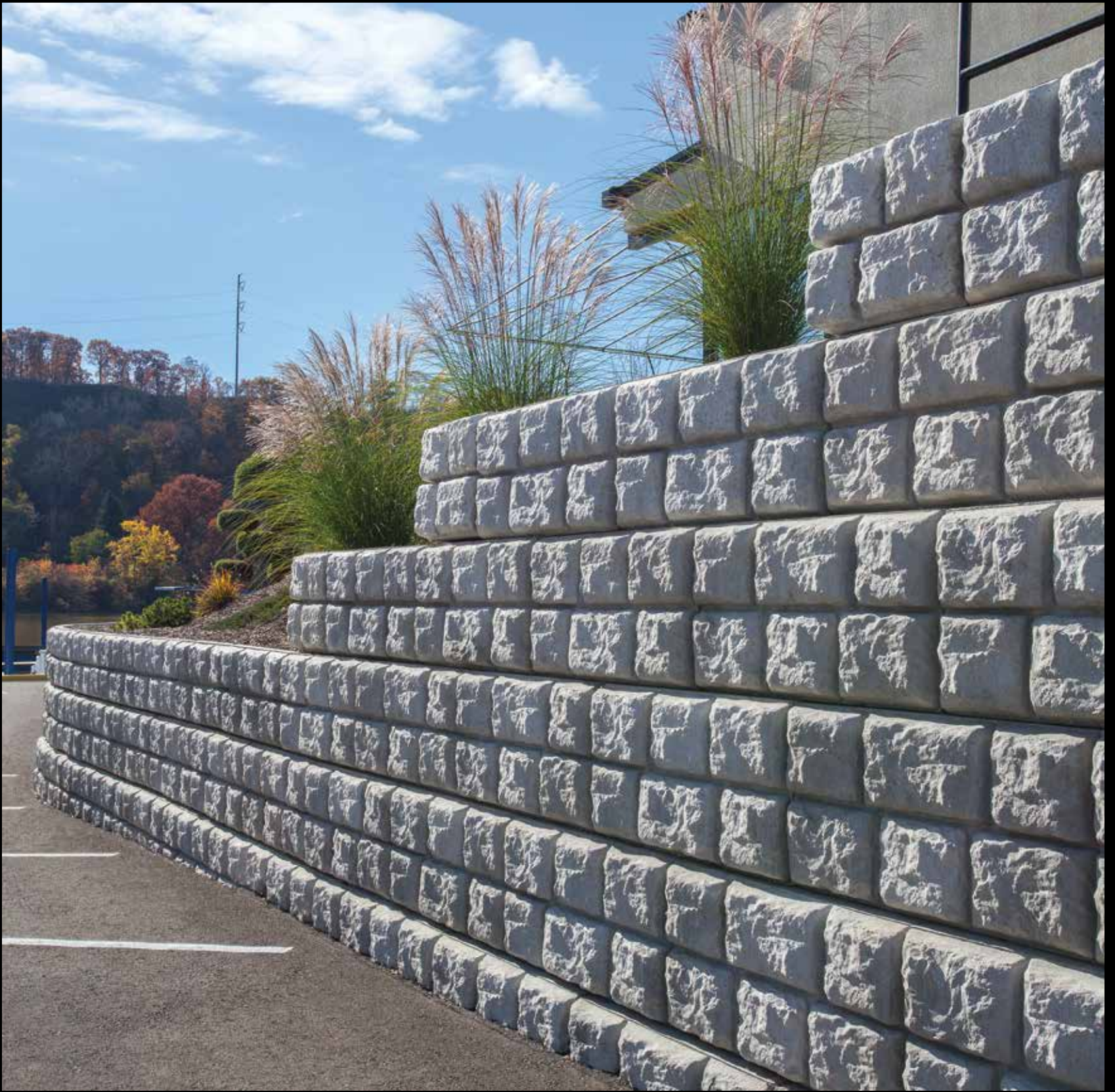
CHARCOAL



MOUNTAIN RUSTIC

Visit [LAMPUS.COM](http://LAMPUS.COM) for more fitting information.





SERIES 2500 - NATURAL

*The colors of products shown are for reference only. Actual colors may vary.*

# SERIES 2500



NATURAL



48" x 24" x 24"  
8 face sq. ft. / unit  
2,250 lbs. / unit

Visit [LAMPUS.COM](http://LAMPUS.COM) for more fitting information.





VERSA-LOK® STANDARD - ALLEGHENY BLEND  
 ALSO SHOWN: C CAP - ALLEGHENY BLEND

# VERSA-LOK® STANDARD



STANDARD:  
 16" x 12" x 6"  
 24 units / pallet  
 1.5 units / sq. ft.  
 2,100 lbs. / pallet



STANDARD - WEATHERED  
 16" x 12" x 6"  
 24 units / pallet  
 1.5 units / sq. ft.  
 2,100 lbs. / pallet



HALF BLOCK:  
 48 units / pallet  
 12" x 8" x 6"  
 2,100 lbs. / pallet



FULL RETURN:  
 36 units / pallet  
 16" x 8" x 6"  
 2,280 lbs. / pallet





VERSA-LOK® STANDARD - SARATOGA BLEND  
 ALSO SHOWN: VERSA-LOK® HALF BLOCK - SARATOGA BLEND; C CAP - SARATOGA BLEND



VERSA-LOK® STANDARD - WEATHERED SIERRA BLEND  
 ALSO SHOWN: C CAP - WEATHERED SIERRA BLEND

*The colors of products shown are for reference only. Actual colors may vary.*



ALLEGHENY BLEND \*



DESERT BLEND \*



NATURAL



NEWPORT BLEND \*



SANDSTONE



SARATOGA BLEND



SIERRA BLEND \*



SLATE BLEND \*



WILLIAMSBURG BLEND

\*Color stocked in weathered material.





VERSA-LOK® COBBLE - WEATHERED DESERT BLEND

ALSO SHOWN: VERSA-LOK® HALF BLOCK - WEATHERED DESERT BLEND; STRATFORD CIRCLE - WILLIAMSBURG BLEND (SEALED); OMNI-VINTAGE™ 500 - DESERT BLEND; TAPERED BULLNOSE CAP - DESERT BLEND

# VERSA-LOK® ACCENT & COBBLE



ACCENT:  
12" x 12" x 4"  
48 units / pallet  
16 face sq. ft. / pallet  
1,795 lbs. / pallet



ACCENT - WEATHERED:  
12" x 12" x 4"  
48 units / pallet  
16 face sq. ft. / pallet  
1,795 lbs. / pallet



COBBLE:  
8" x 12" x 6"  
48 units / pallet  
16 face sq. ft. / pallet  
1,872 lbs. / pallet



COBBLE - WEATHERED:  
8" x 12" x 6"  
48 units / pallet  
16 face sq. ft. / pallet  
1,872 lbs. / pallet



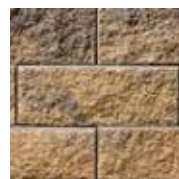


VERSA-LOK® ACCENT - DESERT BLEND  
ALSO SHOWN: C CAP - SANDSTONE

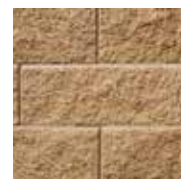


VERSA-LOK® COBBLE - WEATHERED ALLEGHENY BLEND  
ALSO SHOWN: VERSA-LOK® STANDARD - WEATHERED ALLEGHENY BLEND; C CAP - WEATHERED ALLEGHENY BLEND; GRANDVIEW™ - DESERT BLEND (SEALED)

*The colors of products shown are for reference only. Actual colors may vary.*



ALLEGHENY BLEND \*

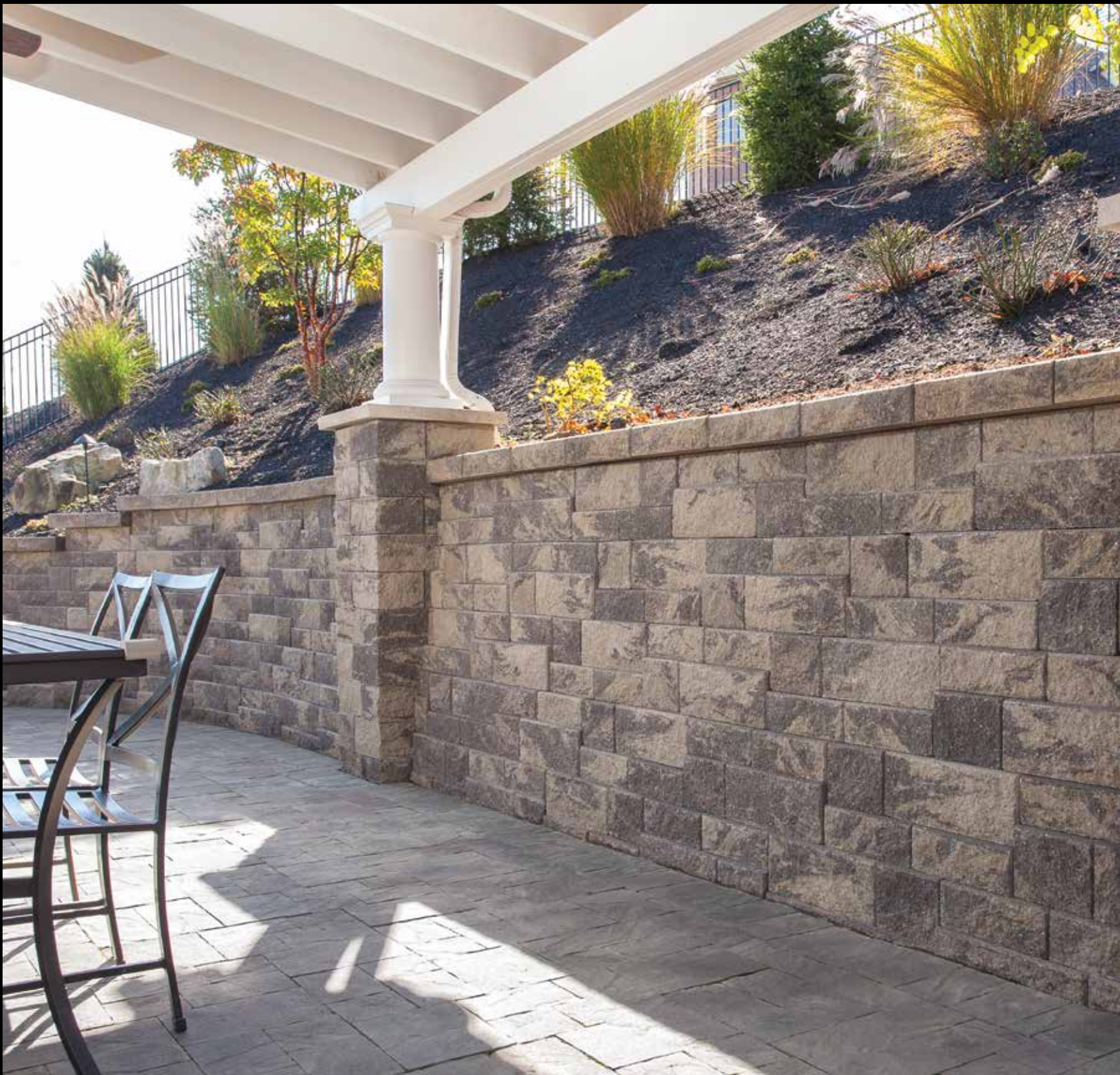


DESERT BLEND \*



SLATE BLEND \*





VERSA-LOK® MOSAIC - SLATE BLEND  
 ALSO SHOWN: VERSA-LOK® HALF BLOCK - SLATE BLEND; C CAP - SLATE BLEND; LIMESTONE COLUMN CAP - NATURAL

# VERSA-LOK® MOSAIC



PANEL:  
 24" x 12" x 10" / Panel  
 Panel = 1 Standard,  
 1 Cobble, 2 Accent



\*  
 PANEL - WEATHERED:  
 24" x 12" x 10" / Panel  
 Panel = 1 Standard,  
 1 Cobble, 2 Accent





VERSA-LOK® MOSAIC - WEATHERED ALLEGHENY BLEND  
 ALSO SHOWN: C CAP - WEATHERED ALLEGHENY BLEND

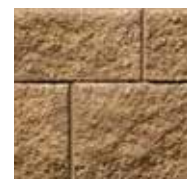


VERSA-LOK® MOSAIC - ALLEGHENY BLEND  
 ALSO SHOWN: C CAP - ALLEGHENY BLEND

*The colors of products shown are for reference only. Actual colors may vary.*



ALLEGHENY BLEND \*



DESERT BLEND \*



SLATE BLEND \*





VERSA-LOK® SQ. FT. BLOCK - ALLEGHENY BLEND  
ALSO SHOWN: C CAP - ALLEGHENY BLEND

# VERSA-LOK® SQ. FT. BLOCK



18" x 12" x 8"  
24 units / pallet  
2,256 lbs. / pallet



CORNER:  
12" x 6" x 8"  
36 units / pallet  
1,730 lbs. / pallet





VERSA-LOK® SQ. FT. BLOCK - WILLIAMSBURG BLEND  
 ALSO SHOWN: C CAP - WILLIAMSBURG BLEND

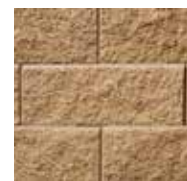


VERSA-LOK® SQ. FT. BLOCK - SLATE BLEND  
 ALSO SHOWN: C CAP - SLATE BLEND (COMMERCIAL APPLICATION UNDER CONSTRUCTION)

*The colors of products shown are for reference only. Actual colors may vary.*



ALLEGHENY BLEND



DESERT BLEND



SLATE BLEND









## **CAPS & COPING**

<b>C CAP &amp; C-2 CAP.....</b>	<b>48</b>
<b>OMNI-VINTAGE™ 750.....</b>	<b>50</b>
<b>TAPERED BULLNOSE CAP.....</b>	<b>51</b>
<b>ROSETTA® CAPS &amp; COPING.....</b>	<b>52</b>
<b>LIMESTONE COLUMN CAP.....</b>	<b>54</b>
<b>PREMIER COLUMN CAP.....</b>	<b>55</b>

C-2 CAP - WEATHERED DARK BROWN (SPECIAL ORDER)  
ALSO SHOWN: VERSA-LOK® MOSAIC & HALF BLOCK - WEATHERED DARK BROWN  
(SPECIAL ORDER); LIMESTONE COLUMN CAP - NATURAL; STRATFORD - DESERT BLEND





C CAP - ANTHRACITE  
 ALSO SHOWN: VERSA-LOK® STANDARD - ALLEGHENY BLEND

# C CAP & C-2 CAP



C CAP:  
 16" x 12" x 3 5/8"  
 48 units / pallet  
 2,700 lbs. / pallet



\* C CAP - WEATHERED:  
 16" x 12" x 3 5/8"  
 48 units / pallet  
 2,700 lbs. / pallet



C-2 CAP:  
 16" x 13" x 3 5/8"  
 36 units / pallet  
 1,950 lbs. / pallet



\* C-2 CAP - WEATHERED:  
 16" x 13" x 3 5/8"  
 36 units / pallet  
 1,950 lbs. / pallet





C CAP - WEATHERED ALLEGHENY BLEND  
 ALSO SHOWN: VERSA-LOK® STANDARD & HALF BLOCK- WEATHERED ALLEGHENY BLEND



C CAP - SLATE BLEND  
 ALSO SHOWN: VERSA-LOK® STANDARD & HALF BLOCK - SLATE BLEND; STRATFORD - SLATE BLEND

*The colors of products shown are for reference only. Actual colors may vary.*



ALLEGHENY BLEND \*



DESERT BLEND \*



NATURAL



NEWPORT BLEND



SANDSTONE



SARATOGA BLEND



SIERRA BLEND



SLATE BLEND



WILLIAMSBURG BLEND



ANTHRACITE



ESPRESSO

\*Color stocked in weathered material.





OMNI-VINTAGE™ 750 - DESERT BLEND  
 ALSO SHOWN: COUNTRY STONE - DESERT BLEND; LIMESTONE COLUMN CAP - NATURAL; GRANDVIEW™ - DESERT BLEND



OMNI-VINTAGE™ 750 - DESERT BLEND  
 ALSO SHOWN: COUNTRY STONE - DESERT BLEND; OMNI-VINTAGE™ - DESERT BLEND

# OMNI-VINTAGE™ 750



10 7/8" x 16 1/2" x 2 3/4"  
 64 units / pallet  
 2,610 lbs. / pallet



ALLEGHENY BLEND



DESERT BLEND



SIERRA BLEND





TAPERED BULLNOSE CAP - DESERT BLEND  
 ALSO SHOWN: VERSA-LOK® MOSAIC & HALF BLOCK - WEATHERED ALLEGHENY BLEND

The colors of products shown are for reference only. Actual colors may vary.

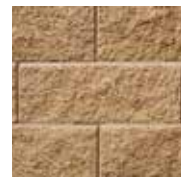
# TAPERED BULLNOSE CAP



7 1/2" - 6 1/2" x 14" x 3 5/8"  
 75 units / pallet  
 2,040 lbs. / pallet



ALLEGHENY BLEND



DESERT BLEND

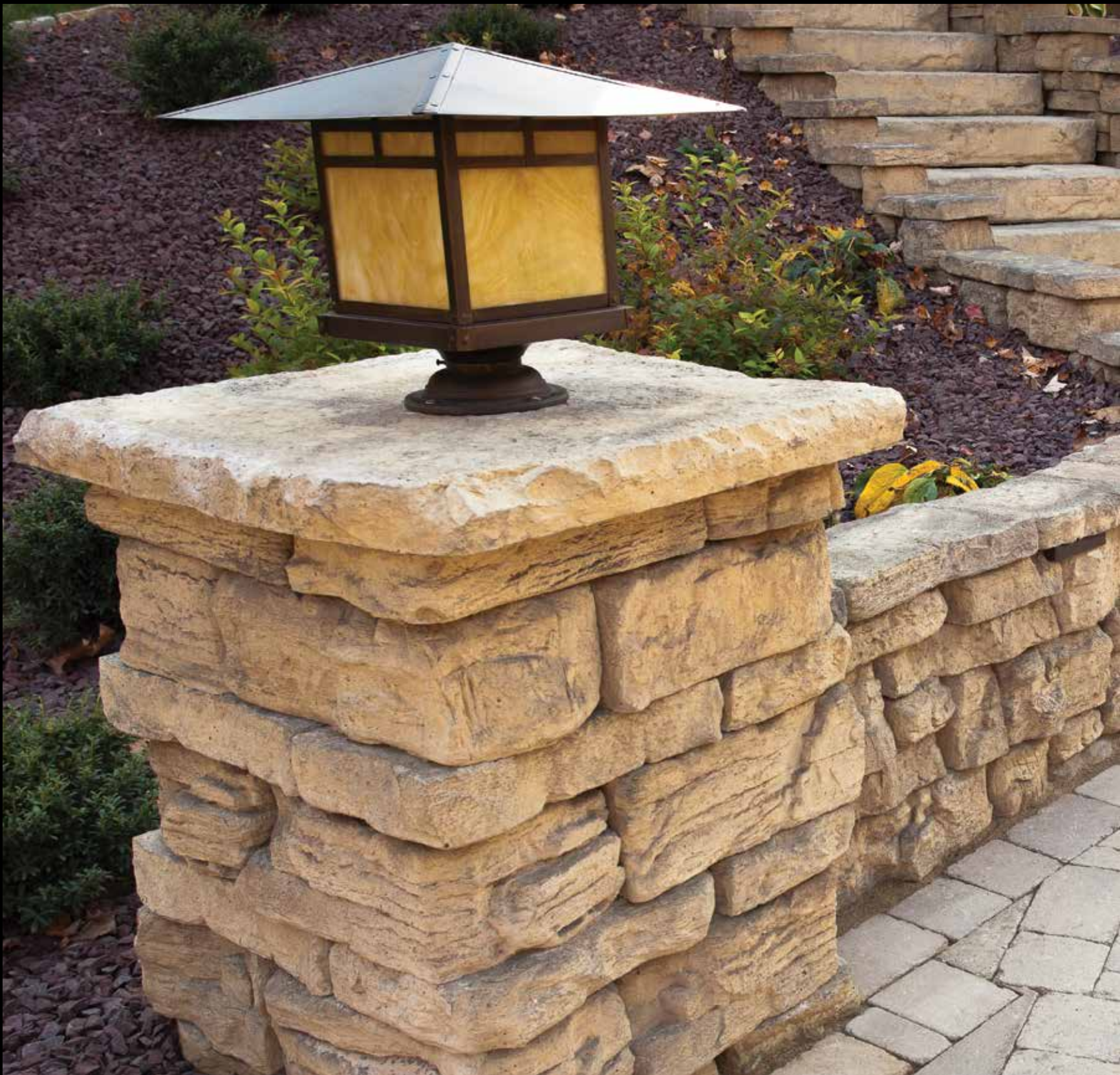


SANDSTONE



SLATE BLEND





ROSETTA® BELVEDERE CAP - MOUNTAIN RUSTIC  
 ALSO SHOWN: ROSETTA® BELVEDERE, BELVEDERE COPING, & DIMENSIONAL STEP - MOUNTAIN RUSTIC; OMNI-VINTAGE™ - DESERT BLEND

# ROSETTA® CAPS & COPING



BELVEDERE COLUMN CAP:  
 27" x 27" x 2 1/2"  
 5 units / pallet  
 760 lbs. / pallet



BELVEDERE COPING:  
 6" x 10 1/4" x 2 1/4"  
 66 lf. / pallet  
 1,550 lbs. / pallet



BELVEDERE COPING:  
 12" x 10 1/4" x 2 1/4"



BELVEDERE COPING:  
 18" x 10 1/4" x 2 1/4"



BELVEDERE COPING:  
 18" x 10 1/4" x 2 1/4"

CONTAINED IN PALLET

CAPS & COPING





ROSETTA® BELVEDERE COLUMN CAP - MOUNTAIN RUSTIC  
 ALSO SHOWN: ROSETTA® DIM. STEP - MT. RUSTIC; COUNTRY STONE - DESERT BLEND; OMNI-VINTAGE™ - DESERT BLEND; HOLLAND - ESPRESSO



ROSETTA® DIMENSIONAL COPING - EARTH  
 ALSO SHOWN: ROSETTA® BELVEDERE - CHARCOAL; ROSETTA® BELVEDERE COPING - MOUNTAIN RUSTIC

The colors of products shown are for reference only. Actual colors may vary.



DIMENSIONAL COPING:  
 24" x 12 1/2" x 2 1/2"  
 63 lf. / pallet  
 1,992 lbs. / pallet



DIMENSIONAL COPING:  
 18" x 12 1/2" x 2 1/2"



DIMENSIONAL COPING END:  
 19" x 12 1/2" x 2 1/5"

NEW

CONTAINED IN PALLET



CHARCOAL



MOUNTAIN RUSTIC



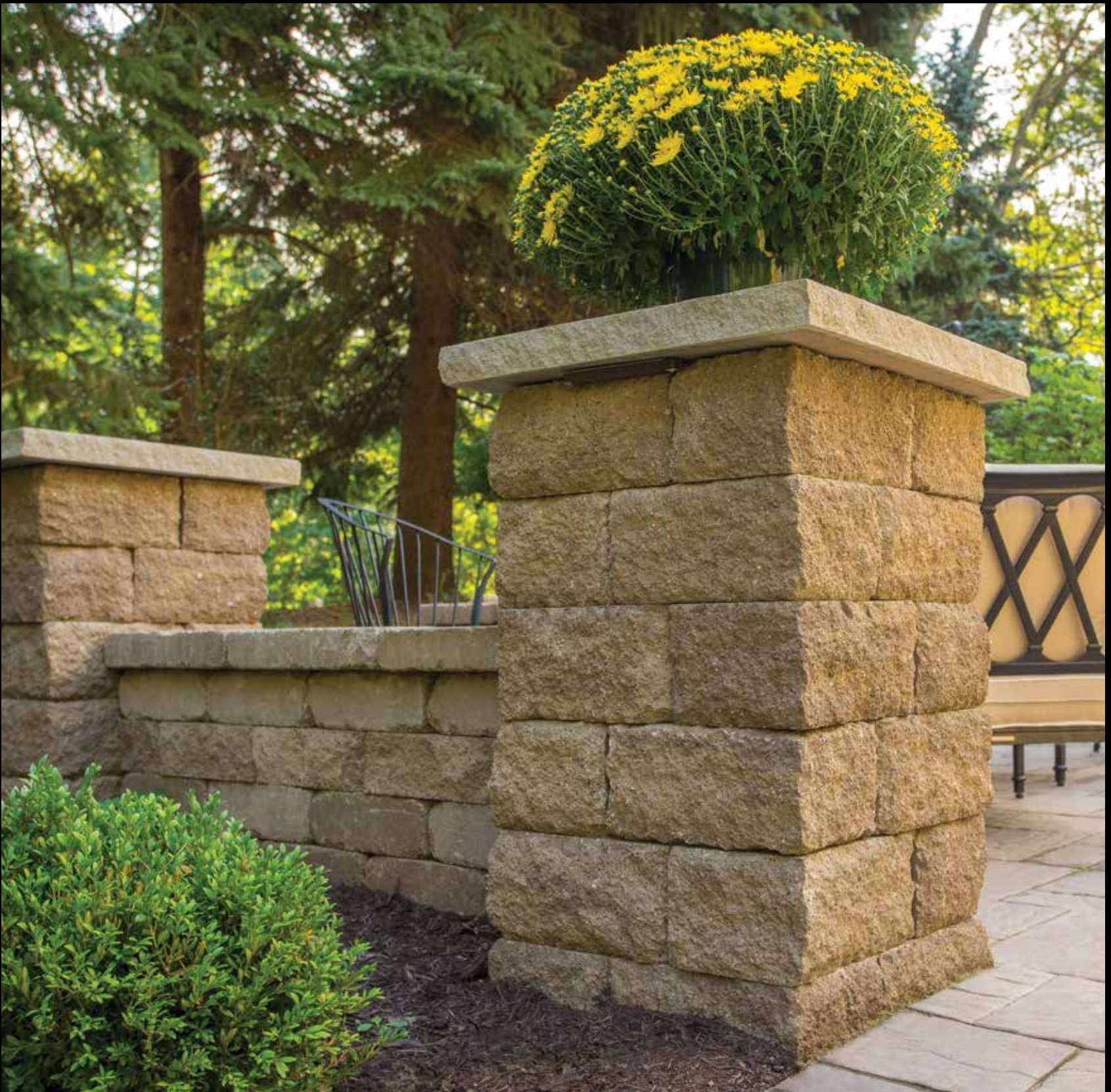
EARTH\*



SMOKE\*

\*Only available in Dimensional Coping.





LIMESTONE COLUMN CAP - NATURAL

ALSO SHOWN: VERSA-LOK® HALF BLOCK - DESERT BLEND; COUNTRY STONE - DESERT BLEND; COUNTRY STONE - DESERT BLEND (SPLIT); OMNI-VINTAGE™ 750 - DESERT BLEND

# LIMESTONE COLUMN CAP



24" x 24" x 2 1/4"  
97 lbs. / unit



NATURAL





PREMIER COLUMN CAP - EARTH  
 ALSO SHOWN: VERSA-LOK® MOSAIC & HALF BLOCK - WEATHERED DESERT BLEND; C CAP - WEATHERED DESERT BLEND

*The colors of products shown are for reference only. Actual colors may vary.*

# PREMIER COLUMN CAP



28" x 28" x 3"  
 1 unit / pallet  
 210 lbs. / pallet



EARTH



SMOKE









## **STEPS & STEPPING STONES**

<b>CABIN ROCK™ .....</b>	<b>58</b>
<b>PREMIER STEP .....</b>	<b>59</b>
<b>ROSETTA® DIMENSIONAL STEP ..</b>	<b>60</b>
<b>ROSETTA® IRREGULAR STEP .....</b>	<b>62</b>





CABIN ROCK™ - MOUNTAIN RUSTIC  
 ALSO SHOWN: ROSETTA® IRREGULAR STEP - MOUNTAIN RUSTIC

# CABIN ROCK™



54" x 22" x 3"  
 3 units / pallet  
 640 lbs. / pallet



42" x 26" x 3"



48" x 24" x 3"

CONTAINED IN PALLET



CHARCOAL



MOUNTAIN RUSTIC





PREMIER STEP - EARTH

The colors of products shown are for reference only. Actual colors may vary.

# PREMIER STEP



PREMIER:  
48" x 15 1/2" x 6"  
6 units / pallet  
2,100 lbs. / pallet



PREMIER HOLLOW:  
48" x 15 1/2" x 6"  
6 units / pallet  
1,500 lbs. / pallet



PREMIER 20:  
48" x 20" x 6"  
4 units / pallet  
1,800 lbs. / pallet

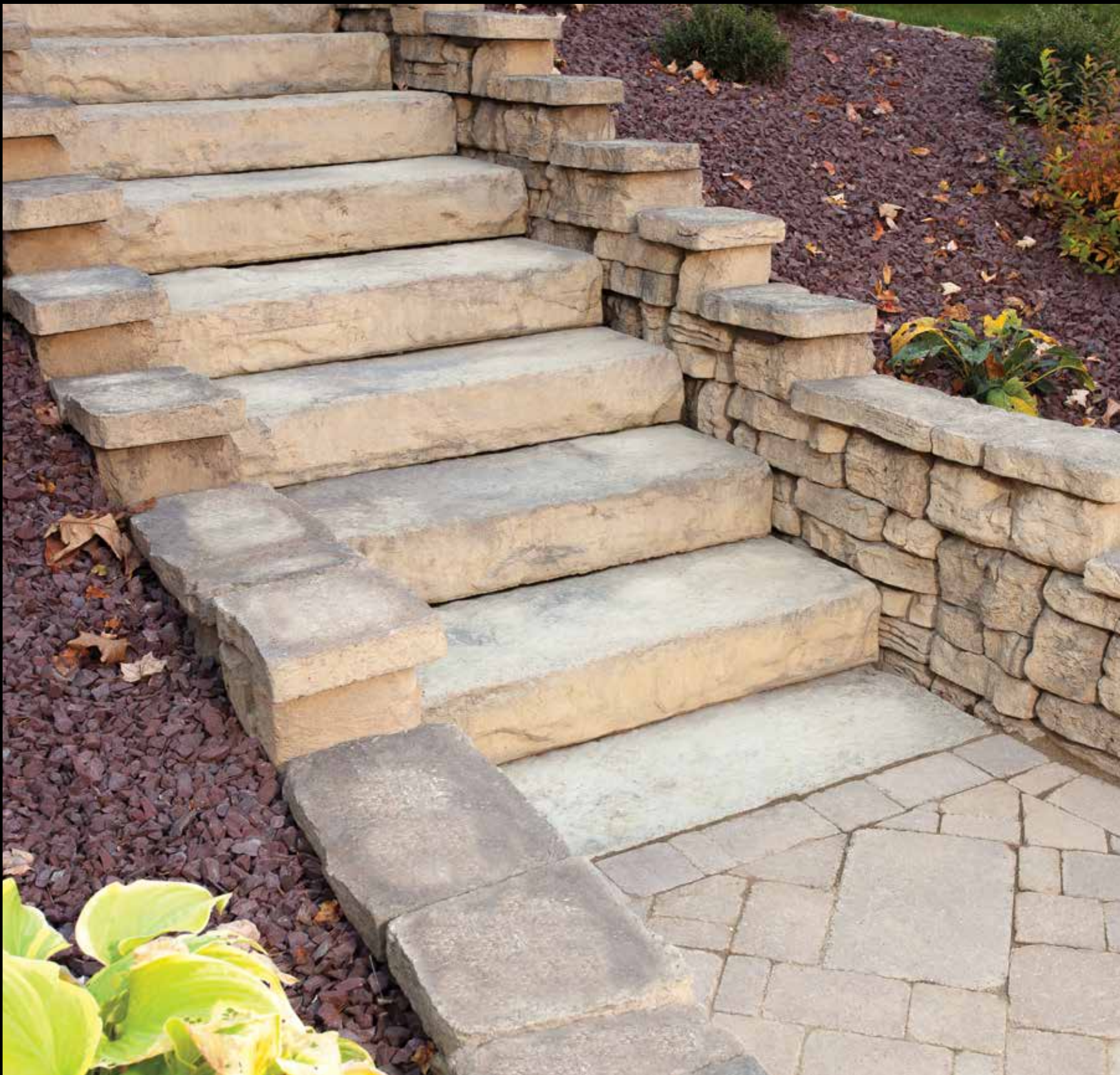


EARTH



SMOKE





ROSETTA® DIMENSIONAL STEP - MOUNTAIN RUSTIC  
 ALSO SHOWN: ROSETTA® BELVEDERE & BELVEDERE COPING - MOUNTAIN RUSTIC; OMNI-VINTAGE™ - DESERT BLEND

# ROSETTA® DIMENSIONAL STEP



48" x 18" x 7"  
 4 units / pallet  
 1,820 lbs. / pallet



72" x 30" x 7"  
 2 units / pallet  
 2,640 lbs. / pallet





ROSETTA® DIMENSIONAL STEP - CHARCOAL  
 ALSO SHOWN: ROSETTA® OUTCROPPING - CHARCOAL



ROSETTA® DIMENSIONAL STEP - MOUNTAIN RUSTIC  
 ALSO SHOWN: VERSA-LOK® STANDARD - WEATHERED DESERT BLEND; C CAP - WEATHERED DESERT BLEND

*The colors of products shown are for reference only. Actual colors may vary.*



CHARCOAL



MOUNTAIN RUSTIC





ROSETTA® IRREGULAR STEP - MOUNTAIN RUSTIC  
 ALSO SHOWN: ROSETTA® BELVEDERE & BELVEDERE COPING - MOUNTAIN RUSTIC

# ROSETTA® IRREGULAR STEP



54" x 22" x 7"  
 3 units / pallet  
 1,446 lbs. / pallet



48" x 24" x 7"



42" x 26" x 7"

CONTAINED IN PALLET





ROSETTA® IRREGULAR STEP - MOUNTAIN RUSTIC

*The colors of products shown are for reference only. Actual colors may vary.*



CHARCOAL



MOUNTAIN RUSTIC



# ALSO AVAILABLE



WHITACRE-GREER - DARK ANTIQUE

## BELDEN BRICK BLACK DIAMOND



4" x 8" x 2 1/4"  
No Chamfer • No Lugs  
104 sq. ft. / cube



## BELDEN BRICK WHEATFIELD



4" x 8" x 2 1/4"  
Chamfer • Lugs  
104 sq. ft. / cube



## WHITACRE-GREER DARK ANTIQUE



9" x 3" x 2 1/4"  
Chamfer • No Lugs  
95 sq. ft. / cube @ 3" tall  
126 sq. ft. / cube @ 2 1/4" tall







CLASSIC STONE - CAPPUCCINO  
ALSO SHOWN: HOLLAND - DESERT BLEND; STRATFORD - DESERT BLEND

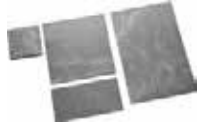


DYNAPRINT® - DESERT BLEND  
ALSO SHOWN: COUNTRY STONE - ALLEGHENY BLEND



ECO-TEK® - DESERT BLEND  
ALSO SHOWN: ECO-TEK® - WHITE

## CLASSIC STONE



FRENCH PATTERN:  
4 shapes up to 16" x 24" x 1 1/4"  
136 sq. ft. / crate

## DYNAPRINT®



12" x 11" x 2 3/4"  
61 sq. ft. / pallet  
1,936 lbs. / pallet

## ECO-TEK®



4" x 8" x 3 1/8"  
76 sq. ft. / pallet  
2,685 lbs. / pallet



HOLLAND COLONIAL - TERRA-COTTA  
ALSO SHOWN: VERSA-LOK® ACCENT - DESERT BLEND; C CAP - DESERT BLEND



HANDY STONE II - DESERT BLEND  
ALSO SHOWN: VERSA-LOK® STANDARD - DESERT BLEND; STRATFORD CIRCLE - DESERT BLEND



LANDING STONE - MOUNTAIN RUSTIC

## HOLLAND COLONIAL



3 15/16" x 7 7/8" x 2 3/8"  
105 sq. ft. / pallet  
2,920 lbs. / pallet

## HANDY STONE® II



9" - 6" x 7" x 4"  
175 unit / pallet  
2,625 lbs. / pallet

## LANDING STONE



48" x 30" x 7"  
1 unit / pallet  
880 lbs. / pallet

CALL FOR AVAILABILITY.



# ACCENTS & BORDERS



STRATFORD ACCENT - ANTHRACITE  
ALSO SHOWN: COUNTRY STONE - DESERT BLEND



STRATFORD ACCENT - LIGHT BROWN  
ALSO SHOWN: HERITAGE - SIERRA BLEND



OXFORD - LIGHT BROWN & DARK BROWN  
ALSO SHOWN: OXFORD - DESERT BLEND



STRATFORD CIRCLE ACCENT - ANTHRACITE (SPECIAL ORDER)  
ALSO SHOWN: STRATFORD - NEWPORT BLEND



THINK HARDSCAPE  
THINK GATOR  
THINK

**Alliance**

*Quality is our Strength*







# UNSCREWUPABLE!

www.envirobond.com



for paver joints



Available in Granite and Natural



for larger joints



## EnviroSAND<sup>plus</sup>

EnviroSAND blends a scientifically designed joint sand with a plant-based glue to stabilize the joints of interlocking paving stones (up to 3/8").

## EnviroSTONE<sup>plus</sup>

EnviroSTONE blends crushed stone with a plant-based glue to stabilize the larger joints commonly found in applications such as flagstone (from 3/8" to 2").

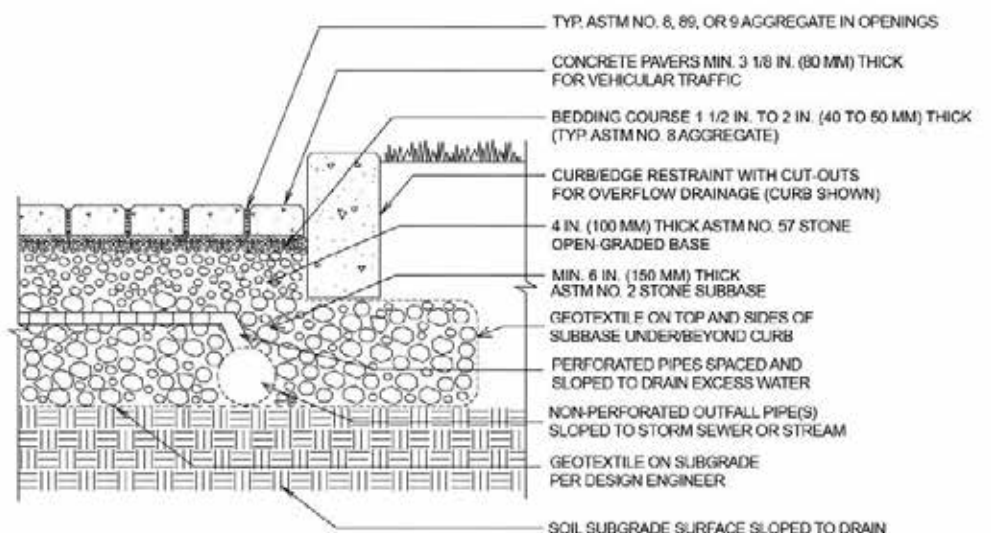
## NO POLY HAZE!

- ✓ Easy to Lift and Re-Lay
- ✓ Can be Installed Before Rain
- ✓ Can be Topped Up



With the use of permeable pavers like Ligonier and Eco-Tek®, you now have an eco-friendly option that filters captured storm water back into the earth where it belongs.

# THE PERMEABLE DIFFERENCE



Partial exfiltration through the soil subgrade. Perforated pipes can be raised above the soil subgrade to drain water from higher depth rainstorms. Smaller storms which often contain higher pollutant concentrations can be captured below the perforated pipes, stored and infiltrated.





GRANDVIEW™ - DESERT BLEND; STRATFORD ACCENT - ANTHRACITE  
ALSO SHOWN: HOLLAND - DESERT BLEND



## THE PROGUARD DIFFERENCE

Proguard is an R.I. Lampus Company proprietary mix design and production process with a tight, attractive surface that more closely resembles natural stone.





# OUR HISTORY

Since 1924, R.I. Lampus Company of Springdale, Pennsylvania has been manufacturing quality concrete products and providing superior service to the tri-state region. For three generations, family owned R.I. Lampus Company has introduced the area to innovative outdoor living, hardscape, and masonry products to accommodate the needs of the consumer through constant product research and development.

R.I. Lampus Company is the largest manufacturer of concrete block and hardscape products in Western Pennsylvania. In addition, our Alloy Division serves the carbon steel, stainless steel, and cast iron industries across the nation. The company has seven manufacturing facilities and a fleet of over 40 heavy-duty delivery vehicles serving the region. Over the last couple of years, R.I. Lampus has strengthened itself into being one of the largest tri-state distributors of clay brick and stone veneer products.

*Ralph & Harry Lampus start our company - 1924*

*Expands concrete block production facility - 1946*

*Supplies original Pittsburgh International Airport - 1946*

*R.I. Lampus Company becomes incorporated - 1952*

*Produces light weight block using expanded shale - 1964*

*Sells record 8.5 million blocks in one year - 1969*

*Acquires Etha Concrete Block Company - 1970*

*Don Lampus becomes President - 1971*

*Produces interlocking concrete paving stones - 1976*

*Trademarks Omni-Stone® name - 1976*

*Opens new East Plant in Springdale, PA - 1978*

*Don Lampus becomes CEO - 1984*

*First production of Versa-Lok® - 1988*





*Alloy Plant achieves ISO certification - 1997*

*Builds new production facility in Springdale, PA - 1998*

*Don Lampus Jr. becomes President - 2005*

*Acquires Rennekamp Block Co. & Parkway Block Co. - 2007*

*Builds new wetcast block production in Wampum, PA - 2008*

*Don Lampus receives NCMA Lifetime Achievement Award - 2014*

*Opens Lampus Direct in Erie, PA - 2014*

*Opens Brick & Stone Showroom in Cambridge Springs, PA - 2014*

*Acquires Harmar Direct Brick in Harmarville, PA - 2014*

*Harascope pioneer Robert Welling retires after 43 years - 2015*





# **R.I.** Lampus *Company*

816 R.I. LAMPUS AVENUE, SPRINGDALE, PA 15144 • 412.362.3800 • LAMPUS.COM

