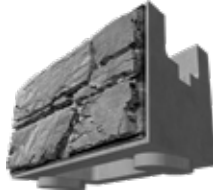


MAGNUMSTONE®

STANDARD BLOCKS



BASE
 Face Width: 48"
 Back Width: 39"
 Depth: 25"
 Height: 24"
 Weight/Unit: 1,295 Lbs.
 Units/Pallet: 2
 Volume Voids: 6.1 Ft.³
 Face Area: 8 Sq. Ft.
 Batter/Setback: 2.4°



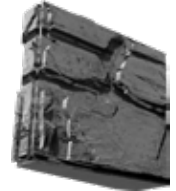
STANDARD
 Face Width: 48"
 Back Width: 39"
 Depth: 25"
 Height: 24"
 Weight/Unit: 1,270 Lbs.
 Units/Pallet: 2
 Volume Voids: 6.1 Ft.³
 Face Area: 8 Sq. Ft.
 Batter/Setback: 2.4°



TOP
 Face Width: 48"
 Back Width: 39"
 Depth: 25"
 Height: 24"
 Weight/Unit: 1,220 Lbs.
 Units/Pallet: 2
 Volume Voids: 6.1 Ft.³
 Face Area: 8 Sq. Ft.
 Batter/Setback: 2.4°



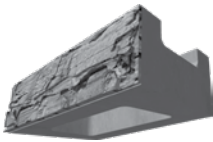
HALF
 Face Width: 24"
 Back Width: 14.5"
 Depth: 25"
 Height: 24"
 Weight/Unit: 730 Lbs.
 Units/Pallet: 4
 Face Area: 4 Sq. Ft.
 Batter/Setback: 2.4°



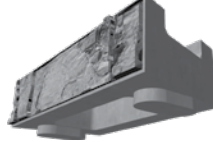
UNIVERSAL END/CORNER
 Front Width: 4"
 Back Width: 9"
 Depth: 28"
 Height: 24"
 Weight/Unit: 270 Lbs.
 Units/Pallet: 2
 Face Area: 4.66 Sq. Ft.

NOTE: Available with a slot on the back for use with extenders

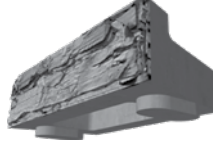
HALF-HIGH BLOCKS



HALF-HIGH BASE
 Face Width: 48"
 Back Width: 39"
 Depth: 25"
 Height: 12"
 Weight: 645 Lbs.
 Units/Pallet: 2
 Volume Voids: 3.15 Ft.³
 Face Area: 4 Sq. Ft.



HALF-HIGH STANDARD
 Face Width: 48"
 Back Width: 39"
 Depth: 25"
 Height: 12"
 Weight: 635 Lbs.
 Units/Pallet: 2
 Volume Voids: 3.15 Ft.³
 Face Area: 4 Sq. Ft.



HALF-HIGH TOP
 Face Width: 48"
 Back Width: 39"
 Depth: 25"
 Height: 12"
 Weight: 590 Lbs.
 Units/Pallet: 2
 Volume Voids: 3.15 Ft.³
 Face Area: 4 Sq. Ft.



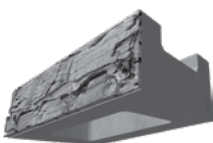
LEFT END/CORNER
 Front Width: 4"
 Back Width: 9"
 Depth: 28"
 Height: 12"
 Weight: 128 Lbs.
 Units/Pallet: 4
 Face Area: 2.33 Sq. Ft.



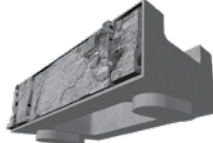
RIGHT END/CORNER
 Front Width: 4"
 Back Width: 9"
 Depth: 28"
 Height: 12"
 Weight: 128 Lbs.
 Units/Pallet: 4
 Face Area: 2.33 Sq. Ft.

NOTE: Select left & right units looking at the face of the wall

HALF-HIGH BLOCKS



HALF-HIGH BASE
 Face Width: 48"
 Back Width: 39"
 Depth: 25"
 Height: 12"
 Weight: 645 Lbs.
 Units/Pallet: 2
 Volume Voids: 3.15 Ft.³
 Face Area: 4 Sq. Ft.



HALF-HIGH STANDARD
 Face Width: 48"
 Back Width: 39"
 Depth: 25"
 Height: 12"
 Weight: 635 Lbs.
 Units/Pallet: 2
 Volume Voids: 3.15 Ft.³
 Face Area: 4 Sq. Ft.

EXTENDERS

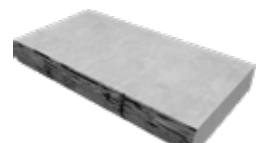


2 FT. EXTENDER
 Height: 24"
 Depth: 24"
 Back Width: 30"
 Weight: 573 Lbs.



4 FT. EXTENDER
 Height: 24"
 Depth: 48"
 Back Width: 30"
 Weight: 800 Lbs.

STEP/CAP



STEP/CAP
 Height: 6"
 Depth: 24"
 Width: 48"
 Weight: 580 Lbs.
 Face Area: 4 Ln. Ft.

NOTES



WETCAST
WARRANTY

CAP OPTIONS



MAGNUMSTONE®
STEP/CAP

APPLICATIONS

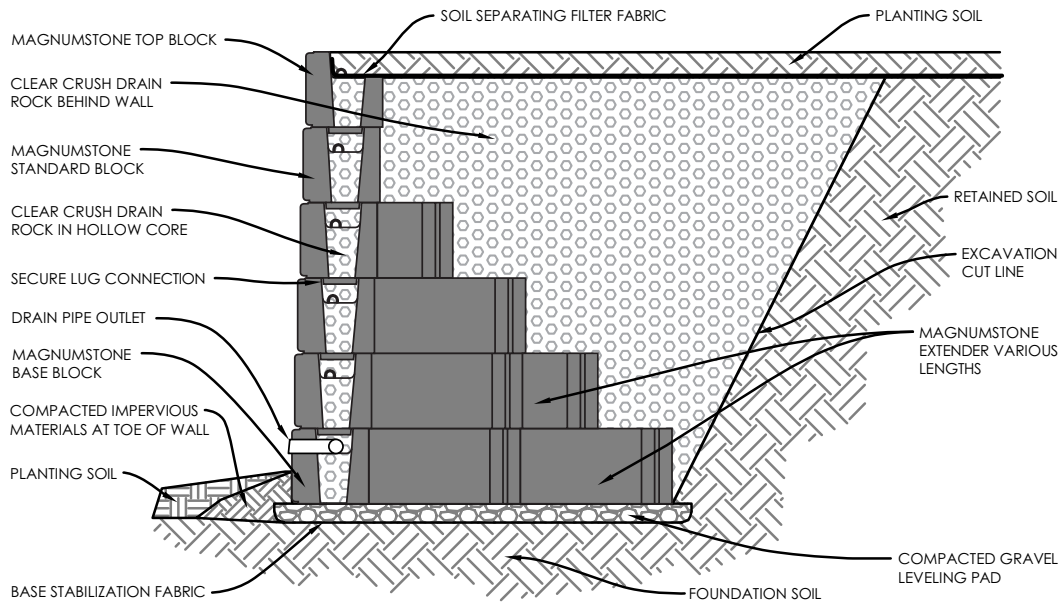


WALLS &
COLUMNS

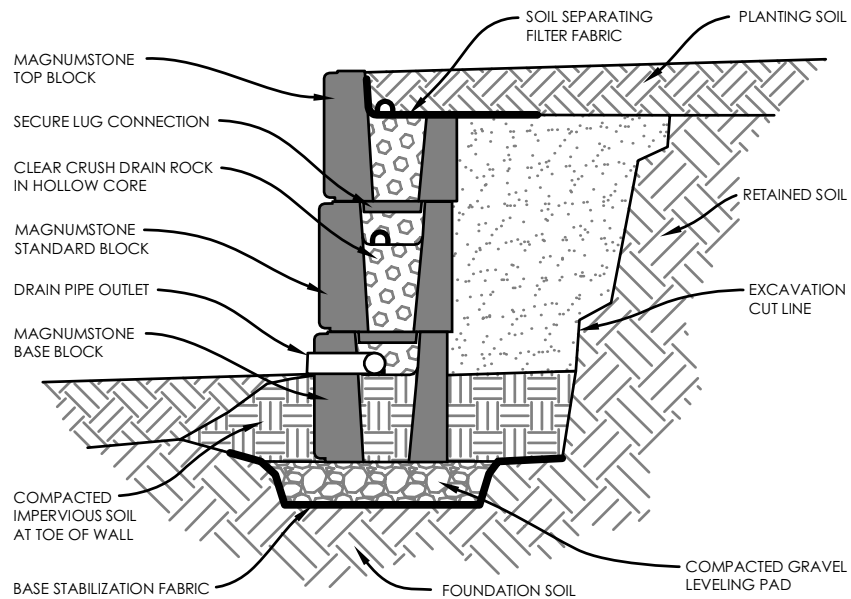
COLOR SWATCHES AVAILABLE AT LAMPUS.COM • ALL WEIGHTS ARE APPROXIMATE.

MAGNUMSTONE®

CROSS SECTIONS



TYPICAL GRAVITY WALL USING EXTENDERS



TYPICAL GRAVITY WALL

NOTES



WET-CAST
WARRANTY

CAP OPTIONS



MAGNUMSTONE®
STEP/CAP

APPLICATIONS



WALLS &
COLUMNS

COLOR SWATCHES AVAILABLE AT LAMPUS.COM • ALL WEIGHTS ARE APPROXIMATE.