



FAIRBORN CEMENT COMPANY- MIAMICOLOR

Fairborn Cement Company's MIAMICOLOR masonry cement is a high quality, versatile, colored product manufactured by blending Fairborn Cement Company's masonry cement with colored pigments and white masonry cement when required. All constituent materials are proportioned at the cement plant under strict quality conditions to provide users with a consistent, quality product. MIAMICOLOR masonry cement is produced using iron oxide pigments which are notable for their UV resistance and minimal fading qualities.

Masonry cement, when combined with mason sand and clean water, produces masonry mortar. Mortar is the glue that bonds masonry units like brick, block and stone together to form a single mass. Combined and with the artful hand of an experienced mason, beautiful, long-lasting structures can be created. MIAMICOLOR masonry cement adds another layer to the design and opens up additional possibilities. Incorporating color into a design provides opportunities to the architect in the form of aesthetically enhanced functionality. Builders prefer the wide range of options they can offer their customers, and homeowners enjoy choosing a color that suits their new or existing home.

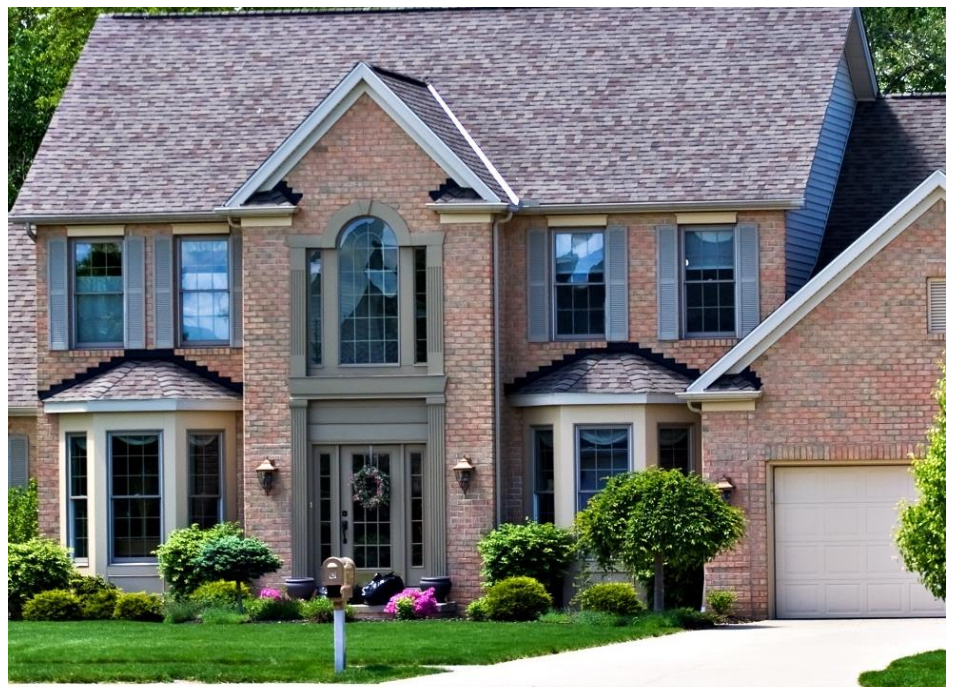
Fairborn Cement Company's MIAMICOLOR is manufactured locally in Fairborn, Ohio and is available through a vast network of partnering distributors.

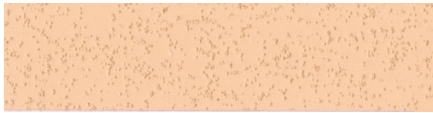
For additional information
please visit:

www.fairborncement.com

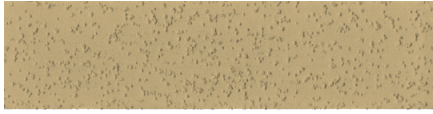
Fairborn Cement Company
3250 Linebaugh Rd.
Xenia, Ohio 45385
1-800-762-0040

American Owned
American Made

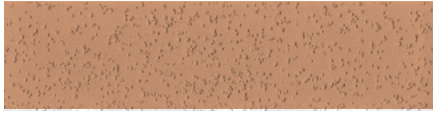




Ivory 10-C



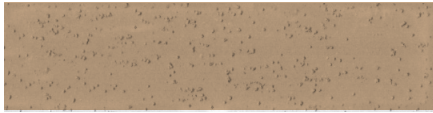
Buff 54-B



Caramel 55-A



Pueblo 59-J



Hearthstone 51-W



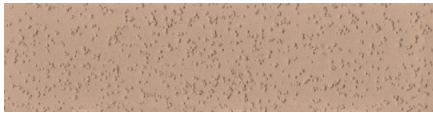
Honeycomb 53-C



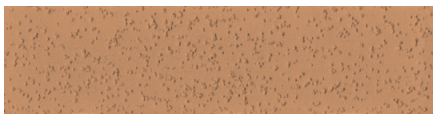
Driftwood 56-D



Natural 57-K



Russet 44-A



Miami Valley Buff 54-E



Dark Sand 40-A

FAIRBORN CEMENT COMPANY



59-F Tusk



58-K Mustard Seed



57-G Khaki



55-C Keystone



60-A Pecan



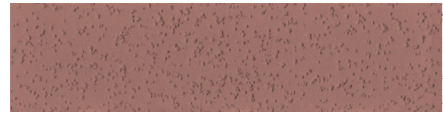
63-A Adobe Clay



65-B Canyon Wall



40-E Tan



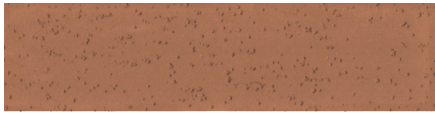
42-B Toffee



68-C Autumn



68-D Kentucky Bourbon



Acorn 47-A



Roasted Pecan 61-H



Hot Brown 48-C



Mocha 36-A



Buckeye 45-D



Dark Chocolate 38-E



Charcoal Black 25-A



Barn Wood 27-B



Smoky Gray 41-A



Slate 52-A



Limestone 58-H

MIAMICOLOR



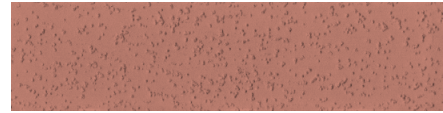
70-E Spanish Tile



46-E Auburn



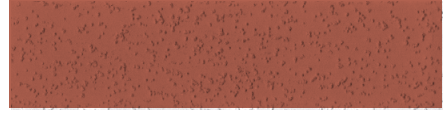
43-F River Sand



50-A Santa Fe



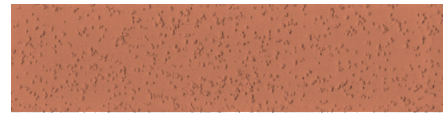
72-C Dixie Granite



78-A Sedona Clay



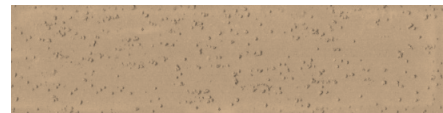
76-D Terra Cotta



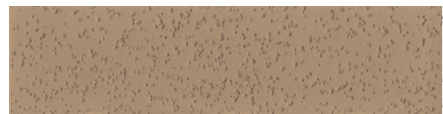
64-A Burnt Orange



79-A Red Brick



52-C Creek Stone



50 Kentucky Ochre



MIAMICOLOR masonry cements are available in Type N and Type S strengths in either our Masonry Cement or Mortar Cement product lines.

Fairborn Cement Company's MIAMICOLOR masonry cements conform to the physical requirements of ASTM C91 and ASTM C1329 for mortar cement.

MIAMICOLOR masonry cements are manufactured in Type N and Type S strengths for use in preparing ASTM C270 Types N and S mortar.

MIAMICOLOR masonry cements are designed to be mixed with clean water and masonry sand conforming to ASTM C144. No further additions are required or recommended.

As a recommendation when specifying MIAMICOLOR, include the product type, color name and color code.

Specification Guide:

Fairborn Cement Company MIAMICOLOR Masonry Cement - Type S, Color Name: Pueblo, Color Code: 59-J

Pre-construction sample panels should be constructed using materials and methods that will be consistent with full scale production. This sample panel should be used for the basis of acceptance by the architect and owner. The sample color kit channels or color cards are not to be used for acceptance purposes, but rather as a starting point to selecting a color. Materials, construction methods and environmental conditions at the time of construction, as well as curing, play an instrumental role in the final color and appearance of the finished mortar.

This digital color card should only be used as a general guide. Shades and hues can vary depending on screen settings.

