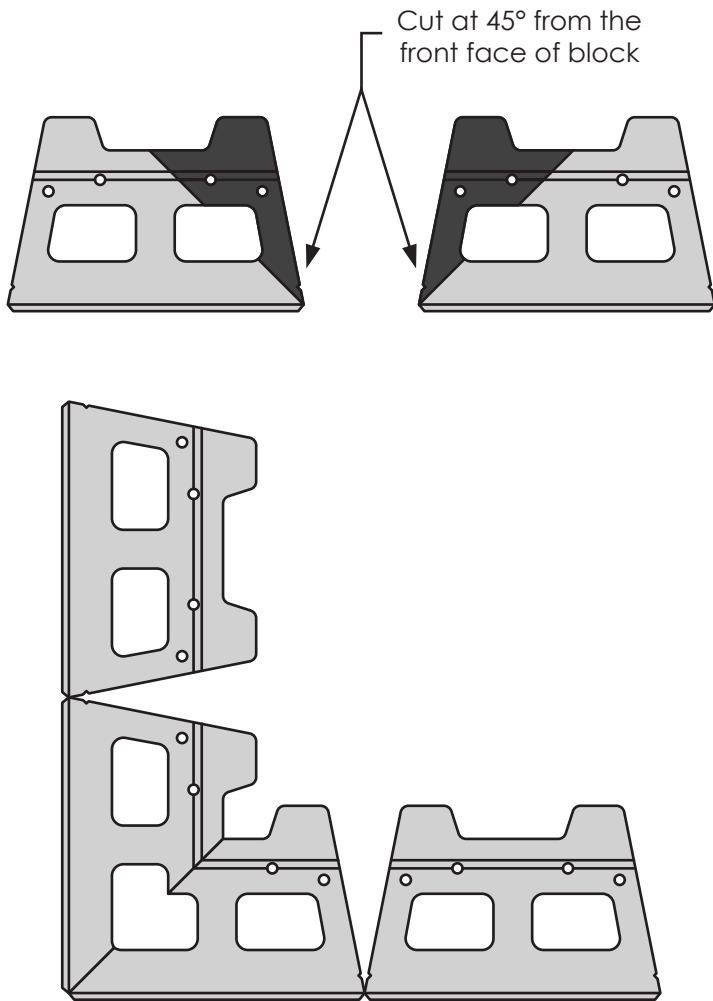


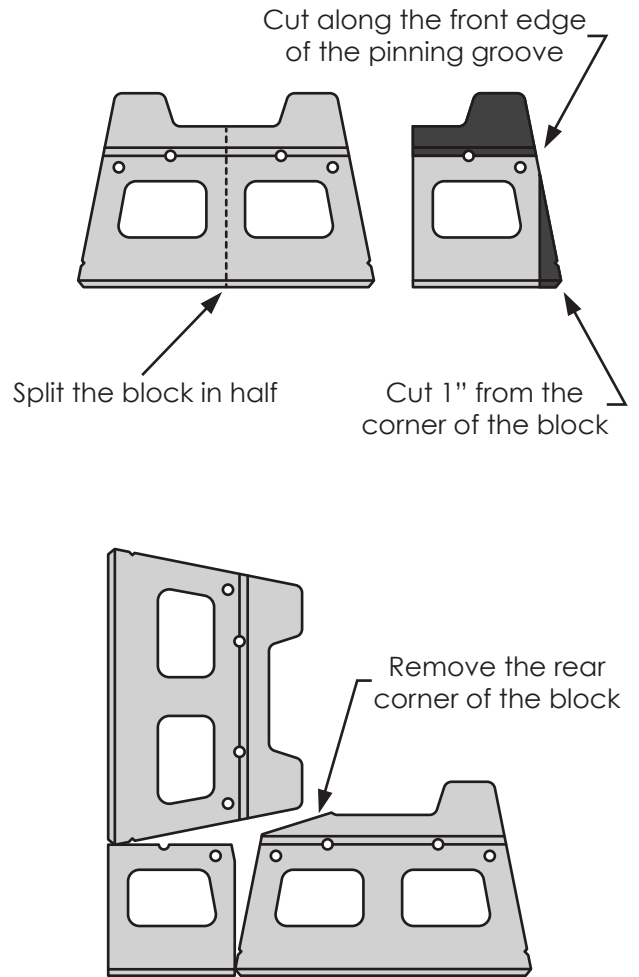
VERSA-LOK®

SQ. FT. MITERED OUTSIDE 90° CORNER GUIDE

FIRST COURSE:



SECOND COURSE:



NOTES:

- This detail shows how to create a mitered 90° outside corner on a Versa-Lok® Square Foot wall by cutting the blocks
- When installing, alternate each course until you reach the top of your wall
 - The dark grey pieces in the diagram represent cuts
- The corners should be glued together using masonry adhesive for added strength