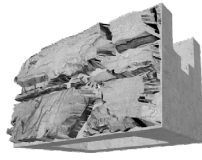


MAGNUMSTONE®

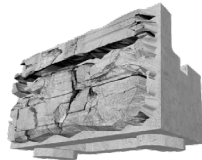
STANDARD BLOCKS



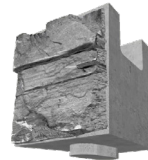
STANDARD
 Face Width: 48"
 Back Width: 39"
 Depth: 25"
 Height: 24"
 Weight/Unit: 1,270 Lbs.
 Units/Pallet: 2
 Volume Voids: 6.1 Ft.³
 Face Area: 8 Sq. Ft.
 Batter/Setback: 2.4°



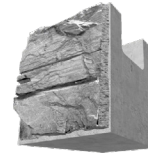
STANDARD BASE
 Face Width: 48"
 Back Width: 39"
 Depth: 25"
 Height: 24"
 Weight/Unit: 1,295 Lbs.
 Units/Pallet: 2
 Volume Voids: 6.1 Ft.³
 Face Area: 8 Sq. Ft.
 Batter/Setback: 2.4°



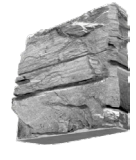
STANDARD TOP
 Face Width: 48"
 Back Width: 39"
 Depth: 25"
 Height: 24"
 Weight/Unit: 1,220 Lbs.
 Units/Pallet: 2
 Volume Voids: 6.1 Ft.³
 Face Area: 8 Sq. Ft.
 Batter/Setback: 2.4°



STANDARD HALF
 Face Width: 24"
 Back Width: 14.5"
 Depth: 25"
 Height: 24"
 Weight/Unit: 730 Lbs.
 Units/Pallet: 4
 Volume Voids: Solid
 Face Area: 4 Sq. Ft.
 Batter/Setback: 2.4°



STANDARD HALF BASE
 Face Width: 24"
 Back Width: 14.5"
 Depth: 25"
 Height: 24"
 Weight/Unit: 710 Lbs.
 Units/Pallet: 4
 Volume Voids: Solid
 Face Area: 4 Sq. Ft.
 Batter/Setback: 2.4°



END/CORNER
 Side: Universal
 Front Width: 4"
 Back Width: 9"
 Depth: 28"
 Height: 24"
 Weight/Unit: 270 Lbs.
 Units/Pallet: 2
 Face Area: 4.66 Sq. Ft.

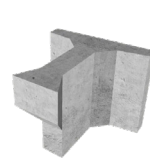
CORNER BLOCKS



FULL RETURN CORNER*
 Side: Left or Right
 Face Width: 47"
 Depth: 23"
 Height: 24"
 Weight/Unit: 1,700 Lbs.
 Units/Pallet: 2
 Volume Voids: 4.01 Ft.³
 Face Area: 11.67 Sq. Ft.
 Batter/Setback: 2.4°



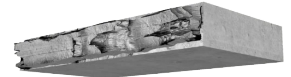
FULL RETURN CORNER BASE*
 Side: Left or Right
 Face Width: 47"
 Depth: 23"
 Height: 24"
 Weight/Unit: 1,675 Lbs.
 Units/Pallet: 2
 Volume Voids: 4.01 Ft.³
 Face Area: 11.67 Sq. Ft.
 Batter/Setback: 2.4°



2 FT. EXTENDER
 Height: 24"
 Depth: 24"
 Back Width: 30"
 Weight: 573 Lbs.
 Units/Pallet: 2



4 FT. EXTENDER
 Height: 24"
 Depth: 48"
 Back Width: 30"
 Weight: 800 Lbs.
 Units/Pallet: 2



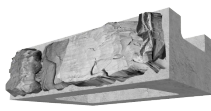
STEP/CAP
 Height: 6"
 Depth: 24"
 Width: 48"
 Weight: 580 Lbs.
 Units/Pallet: 6
 Face Area: 4 Ln. Ft.

**NOTE: Full Return Corner, Full Return Corner Base, & Half-High End/Corner have a Left & Right option. Select Left & Right units looking at the face of the wall design.*

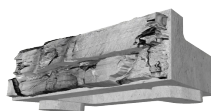
HALF-HIGH BLOCKS



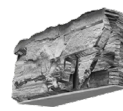
HALF HIGH
 Face Width: 48"
 Back Width: 39"
 Depth: 25"
 Height: 12"
 Weight: 635 Lbs.
 Units/Pallet: 2
 Volume Voids: 3.15 Ft.³
 Face Area: 4 Sq. Ft.



HALF-HIGH BASE
 Face Width: 48"
 Back Width: 39"
 Depth: 25"
 Height: 12"
 Weight: 645 Lbs.
 Units/Pallet: 2
 Volume Voids: 3.15 Ft.³
 Face Area: 4 Sq. Ft.



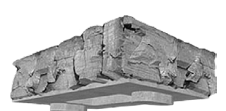
HALF-HIGH TOP
 Face Width: 48"
 Back Width: 39"
 Depth: 25"
 Height: 12"
 Weight: 590 Lbs.
 Units/Pallet: 2
 Volume Voids: 3.15 Ft.³
 Face Area: 4 Sq. Ft.



END/CORNER*
 Side: Left or Right
 Front Width: 4"
 Back Width: 9"
 Depth: 28"
 Height: 12"
 Weight: 128 Lbs.
 Units/Pallet: 4
 Face Area: 2.33 Sq. Ft.



HALF-HIGH 2-SIDED FREESTANDING
 Face Width: 48"
 Depth: 26"
 Height: 12"
 Weight: 525 Lbs.
 Units/Pallet: 2



HALF-HIGH 3-SIDED FREESTANDING END
 Face Width: 48"
 Depth: 26"
 Height: 12"
 Weight: 575 Lbs.
 Units/Pallet: 2

Freestanding Base units are also available.

NOTES



WETCAST
WARRANTY



MAGNUMSTONE®
STEP/CAP



WALLS &
COLUMNS

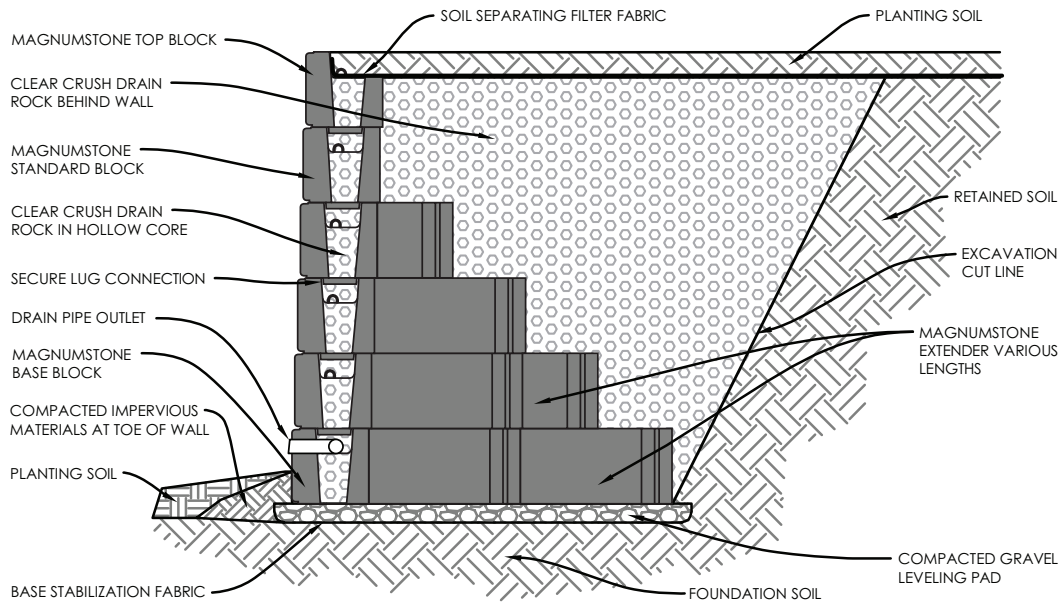
CAP OPTIONS

APPLICATIONS

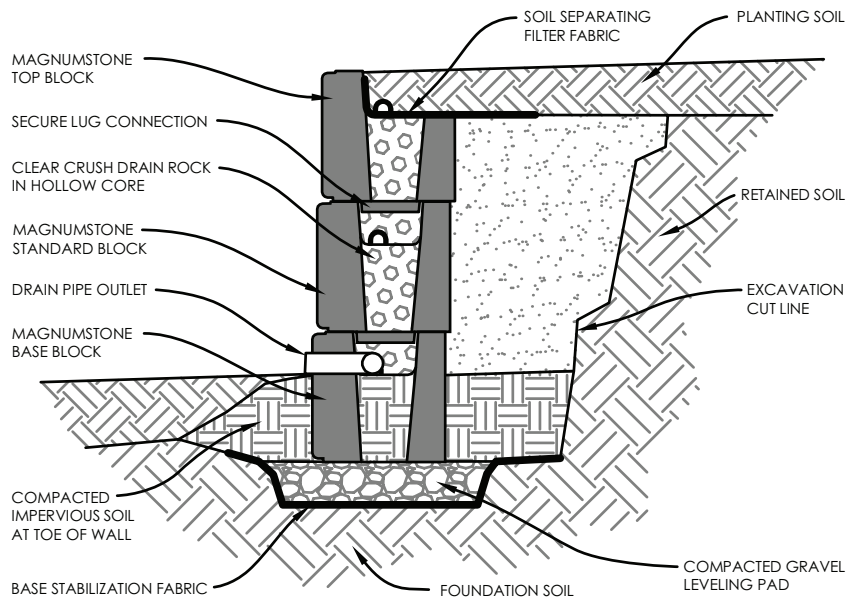
COLOR SWATCHES AVAILABLE AT LAMPUS.COM • ALL WEIGHTS ARE APPROXIMATE.

MAGNUMSTONE®

CROSS SECTIONS



TYPICAL GRAVITY WALL USING EXTENDERS



TYPICAL GRAVITY WALL

NOTES



WET-CAST
WARRANTY

CAP OPTIONS



MAGNUMSTONE®
STEP/CAP

APPLICATIONS



WALLS &
COLUMNS

COLOR SWATCHES AVAILABLE AT LAMPUS.COM • ALL WEIGHTS ARE APPROXIMATE.